

As of April ,2024



MITSUBISHI GENERATOR CO., LTD.
CORPORATE PROFILE REPORT

MITSUBISHI GENERATOR CO., LTD. CORPORATE PROFILE REPORT

00.TABLE OF CONTENTS

1.COMPANY TRADE NAME	P 1
2.DATE OF INCORPORATION	P 1
3.CORPORATE GOVERNANCE STRUCTURE	P 1
4.COMPANY PURPOSES	P 2
5.CONSTRUCTION LICENSE	P 2
6.CAPITAL	P 2
7.SHARES	P 2
8.MAIN FINANCING BANK	P 3
9.COMPANY ORGANIZATION	P 3
10.COMPANY OFFICERS	P 4
11.BASES	P 5
12.HISTORY	P 6

01.COMPANY TRADE NAME

Mitsubishi Generator Co., Ltd.

02.DATE OF INCORPORATION

April 1, 2024

03.CORPORATE GOVERNANCE STRUCTURE

Company with Board of Directors, Corporate Auditors, and Accounting Auditor

04.COMPANY PURPOSES

- (1) Businesses on research, development, design, procurement, manufacture, quality control, sale, installation, and after-sales servicing of Generator and Electrical equipment/devices associated with generator for power plant facilities-
- (2) Businesses on research, development, design, procurement, manufacture, quality control, sale, installation, and after-sales servicing of Synchronous Condensers, Short-circuit Generators, Frequency Converters and equipment and devices associated with rotating machines.
- (3) Design, supervision, and subcontracting of machinery equipment installation work, electrical work, and telecommunication work.
- (4) Market and technical search, engineering businesses, and manufacture and sale of raw materials and components, in relation to preceding items.
- (5) Operation, maintenance, and equipment renovation of various machine devices mentioned in (1) and (2), as well as consultancy and technical guidance on these businesses
- (6) Any businesses incidental or related to the above.

05.CONSTRUCTION LICENSE

- (1) License number: (Special Construction License Reiwa 5) No.29107, Issued by Minister of Land, Infrastructure, Transport and Tourism
- (2) License date: March 4, 2024
- (3) Types of licensed construction businesses: (Special) Electrical work, and Telecommunication work

06.CAPITAL

Amount of Capital JPY1,000,000,000***

07.SHARES

- (1) Total number of authorized shares 40,000 shares
- (2) Total number of issued shares 14,088 shares
- (3) Number of shareholders 2 shareholders
- (4) Statuses of major shareholders

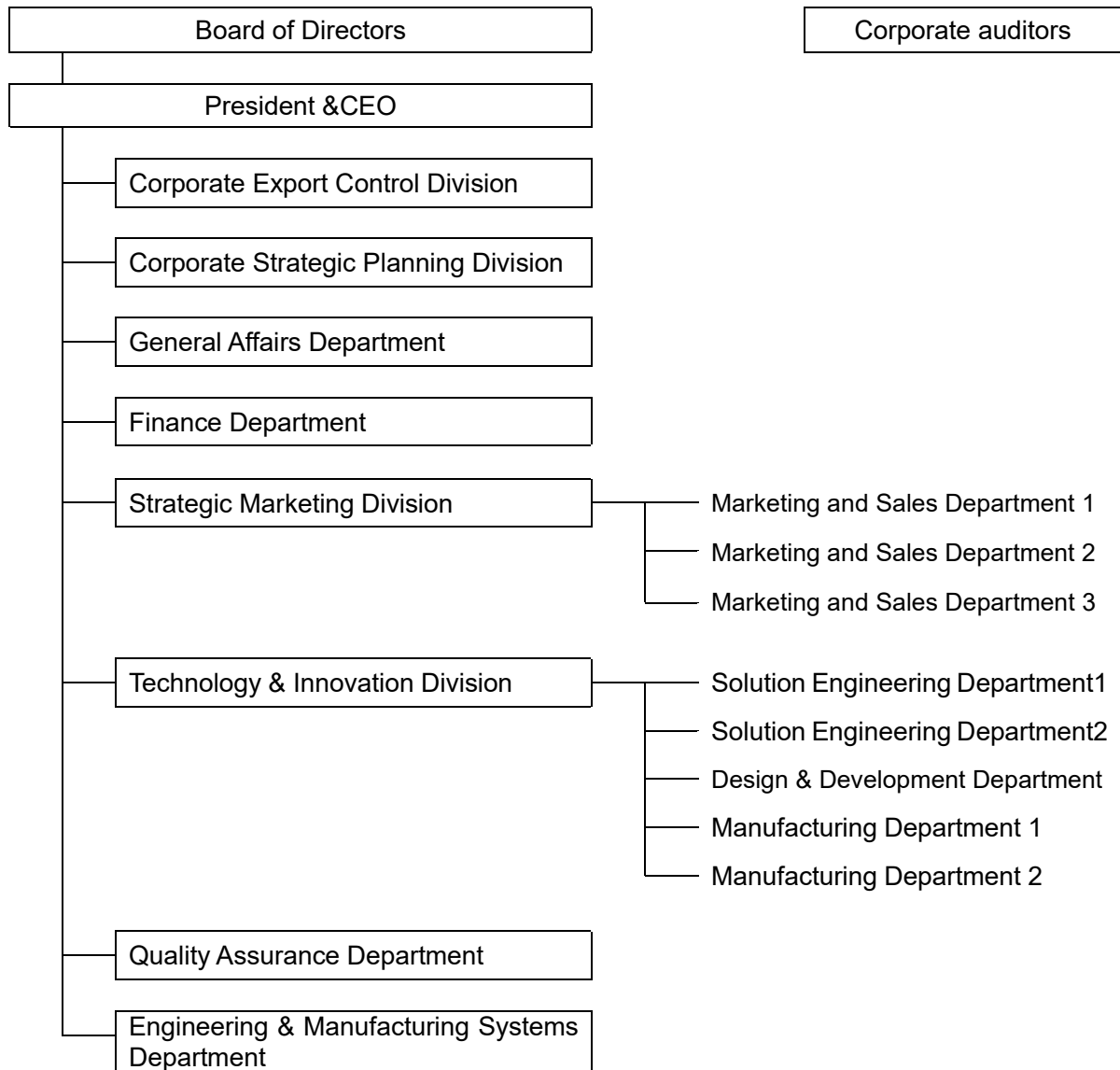
Shareholder names	Number of shares held	Shareholding ratio
Mitsubishi Electric Corporation	7,185 shares	51.0%
Mitsubishi Heavy Industries, Ltd.	6,903 shares	49.0%

(Note) Shareholding ratios are rounded off to two decimal places.

08.MAIN FINANCING BANK

MUFG Bank, Ltd.

09.COMPANY ORGANIZATION



10.COMPANY OFFICERS

Official position title	Name	Date of Birth	Brief history
President and representative director	Naohiro Nakano	December 10, 1960	Apr. 1986 Joined Mitsubishi Electric Corporation Apr. 2017 Officer director, Chief of Transmission & Distribution Systems Center, Mitsubishi Electric Corporation Jun. 2019 Director of Toshiba Mitsubishi-Electric Industrial Systems Corporation Jun. 2022 Vice president, director of Toshiba Mitsubishi-Electric Industrial Systems Corporation Apr. 2024 President and representative director of the Company (present position)
Representative director (CFO/Corporate general affairs)	Masaki Yoshimura	April 11, 1968	Apr. 1992 Joined Mitsubishi Heavy Industries, Ltd. Feb. 2017 Management Chief of Takasago Machinery Works, Management Supervision Department, Mitsubishi Hitachi Power Systems, Ltd. Sep. 2020 Deputy Chief of Business Strategy Department, Mitsubishi Power, Ltd. Oct. 2021 Chief of Group Company Support Office, Energy Transition & Power Headquarters, Energy Systems Domain, Mitsubishi Heavy Industries, Ltd. Apr. 2024 Representative director of the Company (present position)
Director (Accounting)	Ippei Dan	December 11, 1965	Apr. 1989 Joined Mitsubishi Electric Corporation Apr. 2016 Deputy chief of Accounting Department, Toshiba Mitsubishi-Electric Industrial Systems Corporation Apr. 2019 Chief of Accounting Department, Electric Power System Works, Mitsubishi Electric Corporation Apr. 2021 Chief of Finance Department, Hitachi Mitsubishi Hydro Corporation Apr. 2024 Director, and Chief of Accounting Department, of the Company (present position)
Director (Sales)	Hideyuki Kitajima	November 25, 1966	Apr. 1990 Joined Mitsubishi Electric Corporation Apr. 2015 General manager, Dubai Branch, Mitsubishi Electric Corporation Apr. 2019 Deputy chief of Transmission & Distribution Systems Center, Mitsubishi Electric Corporation Apr. 2021 Deputy chief of Affiliated Company Department, Mitsubishi Electric Corporation Apr. 2024 Director, and Chief of Sales Management Department, of the Company (present position)
Director (Technology/Production)	Kado Miyakawa	January 16, 1968	Apr. 1991 Joined Hitachi, Ltd. Feb. 2014 Chief of Generators General Department, Mitsubishi Hitachi Power Systems, Ltd. Sep. 2020 Deputy of headquarter chief, Turbomachinery Headquarters, Mitsubishi Power, Ltd. Oct. 2021 Chief engineer, GTCC business department, Energy Transition & Power Headquarters, Energy Systems Domain, Mitsubishi Heavy Industries, Ltd. Apr. 2024 Director, and Chief of Technology Management Department, of the Company (present position)
Director	Koji Tachibana	January 20, 1957	Apr. 1979 Joined Mitsubishi Electric Corporation Apr. 2007 Chief of Rotating Machines Manufacture Department, Electric Power System Works, Mitsubishi Electric Corporation Apr. 2011 Deputy chief of Electric Power System Works, Mitsubishi Electric Corporation Jun. 2012 President and representative director, Ryoshin Technica Corporation Jun. 2022 Advisor, Ryoshin Technica Corporation Apr. 2024 Director of the Company (present position)
Outside director	Kenshin Yoshida	March 9, 1967	Apr. 1989 Joined Mitsubishi Electric Corporation Apr. 2018 Chief of General Affairs Department, Power Device Manufacture Works, Mitsubishi Electric Corporation Apr. 2023 Officer director, Chief of General Affairs Department, Mitsubishi Electric Corporation Apr. 2024 Outside director of the Company (present position) Officer director, Chief of Unit of General affairs and Human resources, Infrastructure Business Area Strategy Office, Mitsubishi Electric Corporation
Outside director	Yasuyuki Ushijima	February 9, 1973	Apr. 1995 Joined Mitsubishi Heavy Industries, Ltd. Sep. 2020 Chief of Takasago Business Planning Department, Mitsubishi Power, Ltd. Oct. 2021 Chief of Business Planning Strategy, GTCC Business Department, Energy Transition & Power Headquarters, Energy Systems Domain, Mitsubishi Heavy Industries, Ltd. Apr. 2024 Outside director of the Company (present position)

11.BASES

Locations	Business contents	Employees
<p>1-1-2 Wadasakicho, Hyogo-ku, Kobe city, Hyogo prefecture 652-8555</p> <p>TEL(representative number): 078-682-6006 FAX(representative number): 078-682-6011</p>	<p>(Head office function) Administrative work for the whole company</p> <p>(Business function) Design/manufacture, sale, services, and so on of instruments and devices such as generators being constituents of facilities or equipment related to power- generating plants and electric equipment ancillary to such generators, as well as businesses ancillary and related thereto</p>	<p>approximately 500 persons</p>
<p>Yusen Building 2F 2-3-2 Marunouchi, Chiyoda-ku, Tokyo 100-0005</p>	<p>Sale of instruments and devices such as generators being constituents of facilities or equipment related to power- generating plants and electric equipment ancillary to such generators, as well as businesses ancillary and related thereto</p>	<p>approximately 30 persons</p>
<p>3-1-1 Saiwaicho, Hitachi city, Ibaraki prefecture 317-0073</p>	<p>Design/manufacture, sale, services, and so on of instruments and devices such as generators being constituents of facilities or equipment related to power- generating plants and electric equipment ancillary to such generators, as well as businesses ancillary and related thereto</p>	<p>approximately 300 persons</p>

12.HISTORY

Year	Overview
1884	Yataro Iwasaki, the originator of Mitsubishi, leased Nagasaki Shipbuilding Bureau, Ministry of Public Works, named it Nagasaki Shipyard & Machinery Works, and started shipbuilding businesses on a full scale. It was taken over later to Mitsubishi Shipbuilding Co., Ltd. and led to what is currently Mitsubishi Heavy Industries, Ltd.
1921	On the basis of Electrical Manufacturing Plant (Kobe) of Mitsubishi Shipbuilding Co., Ltd., Mitsubishi Electrical Corporation was established as a lineal group company of Mitsubishi Goshi Kaisha, and the plant started to produce, as Kobe Manufacturing Plant (currently, Kobe Manufacturing Plant, Electric Power System Works,), transformers, electric motors, electric fans, and so on.
1934	Mitsubishi Shipbuilding Co., Ltd. added, for its businesses, heavy machines, airplanes, and railway vehicles to its ships, and renamed itself Mitsubishi Heavy Industries, Ltd.
2014	Mitsubishi Hitachi Power Systems, Ltd., whose businesses were mainly thermal power generation system businesses, was established on the investment by Mitsubishi Heavy Industries, Ltd. and Hitachi, Ltd.
2020	Mitsubishi Heavy Industries, Ltd. had the shares of Mitsubishi Hitachi Power Systems, Ltd. assigned by Hitachi, Ltd. and wholly owned Mitsubishi Hitachi Power Systems, Ltd. as its subsidiary. As the company was wholly owned, it was renamed Mitsubishi Power, Ltd.
2021	Mitsubishi Power, Ltd. was integrated into Mitsubishi Heavy Industries, Ltd.
2024	Mitsubishi Generator Co., Ltd., whose businesses were mainly generator businesses, was established on the investment by Mitsubishi Electrical Corporation and Mitsubishi Heavy Industries, Ltd.